

DATE FOR YOUR DIARY!!!!

**CONSULTATION EVENT
SATURDAY 25TH FEBRUARY 2017**



St Erme Neighbourhood Plan

**Newsletter No 2
January 2017**



Progress so far:

We are working with the toolkit provided by Cornwall Council and have just completed the 'Local Landscape Character Assessment' process and have looked at both the whole of the Parish and the sites at the settlement edge. This is a process common to all involved in planning and development. The information and detail will be available at the next public consultation.

Landscape Architect Consultants who have helped two other local parishes successfully with their Neighbourhood Plans have assisted us with both the Stage 1 and Stage 2 phase. The cost of which has been covered by a successful funding application to 'Locality - Groundwork UK'

The results of the Housing Survey have been collated and checked by Cornwall Council and we can now use them in our plan and these will be available to view at the next consultation event.

Several members of the Steering Group have also attended a meeting at one of our neighbouring Parishes – St Clement, where their Steering Group explained how they were tackling their Plan and a good exchange of views took place.



At the Parish Council Precept meeting in November, Michael Edwards gave a presentation on behalf of the Group, and covered the work being done and our timescale towards the referendum. There have also been regular updates in the Village Voice and the groups facebook page.

The Steering Group

The Steering Group, working in conjunction with the Parish Council has been at work for some 13 months and this newsletter continues our promise to bring all parishioners up to date with the progress so far

Inside this issue:

<i>The Steering Group</i>	1
<i>Progress so far</i>	1
<i>Contact Details</i>	1
<i>Have Your Say!</i>	2
<i>Work in progress</i>	2
<i>The members of the Steering Group</i>	2

Contact Details:

Sally Trethewey (Clerk)
St Erme Parish Council
Tel: 07525130663
Email: stermecp@btinternet.com

Website:
www.stermeaparishcouncil.org.uk



St Erme Neighbourhood Plan



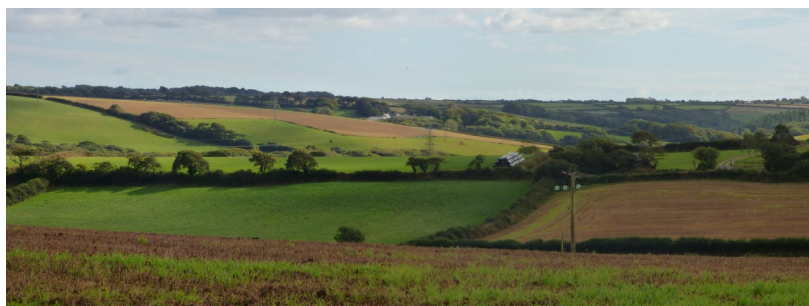
Have Your Say!

The important thing about a Neighbourhood Plan is that it must reflect local needs and the aspirations for of the community but cannot conflict with the Cornwall Council Local Plan and the National Planning Policy Framework however the views of the public are key.



We now want to bring Stage 1 of the Local Landscape Character Assessment for consultation at the **St Erme Community Centre on Saturday 25th February 2017 between 9.00 am and 4.00 pm**. Also available to view on this day will be the Stage 2 of the LLCA - 'Settlement Edge Assessment: 'Making judgements on sensitivity and housing capacity' and the recent Housing Needs Survey

Our landscape consultants and Steering Group members will be present to explain the LLCA and ensure that we get your views. Details of the work carried out so far will also be on display and members will be able to answer any questions.



As an example, one of our neighbouring parishes used the question – 'What do you value about your landscape and where is important to you'. We shall have a similar approach as we feel it is vital to find out how you feel about the development of the parish over the next 15 years.

There will be a coffee shop throughout, some entertainment for children from mid-day and you will be entered in a prize draw based on the **number** on this newsletter. All you have to do is bring it with you on the day!

More details will follow on the Facebook page, in the parish noticeboards and a leaflets through your door.

This is **YOUR** Parish—Have **YOUR** Say!!

Work in Progress:

Members of the Group are looking at the initial survey/questionnaire from March 2015 and are researching the position regarding Infrastructure, Highways, Schools and Businesses, once again leading towards further consultation with the community on these issues.



The Members of the Steering Group:

CLlr Robert Trethewey BEM
Michael Edwards
Richard Kerswell
Marie Wills
CLlr Phil Jones
CLlr Colin Pound
Spencer Sanford
Clive Grose
CLlr Phil Hodgkinson
Sally Trethewey (Clerk)