
THE ST ERME AND TRISPEN VILLAGE VOICE

Issue 128

January/February 2018

So here we are, 2018. What will it hold?

The spring bulbs will start to appear; I've already seen daffodils in flower and it's still December as I write yet my roses continued to flower until the recent rather cold snap so what's going on with the seasons? I don't know!

I have seen as I've compiled the contributions this time that the Silver Circle need help to set up the hall.. See their article for more details. Also of note, the Church are looking for Flower Arrangers - again see the Church page for contact information.

The Winter Olympics are in February - that's a good number of TV watching hours for me; in absolute awe of the skills and courage. On a personal level a good friend and I will meet up for the first time in many years to ski together. We worked together in the midlands 30 years ago and we always went skiing with a large group of colleagues at the time. We both moved away from the midlands in quite different directions. We have always kept in touch, rarely have we been able to meet up but 2018 will finally see us in a ski resort at the same time for a few days.

So I am really looking forward to that; I hope you all have something wonderful to look forward to as well.

Sharon

Funday AGM

The Funday AGM will be held in the Community Centre on Wednesday 23rd January at 7.30pm. Please make every effort to attend and contribute your ideas to the future of this great community event.

COMMUNITY NEWS and INFORMATION

Welcome to Twinkle Totz



TWINKLE TOTZ

A weekly playgroup for babies & toddlers at
St. Erme Village Hall.

Every Monday from 9am to 11.30am in term time.

Crafts & messy play, toys galore, free play,
story time, sing-a-long, baby area, snacks
& tea or coffee for the adults!

Come & join us & make some new friends,
everyone welcome.

£1.00 per child up to 12 months old

£3.00 per child/family from 12 months old

For further details & to see what events we have organised please
contact June on
[Twinkle Totz facebook page](#)

Trispen Methodist Church

*meets each Sunday
at 11 am and 6:15pm
to which everyone is welcome.
There is a Junior Church
at 11am for children.*

*Each Tuesday at 7:30pm
there is either a
Bible Study at the chapel
or a prayer meeting
in a home: for
details phone Nick 270805.*

*There is a lunch
for senior citizens
on the 2nd Thursday
of each month.
Please book with
Bridget Dymond (262824)*



The past few months have flown past and we have enjoyed talks on 'Looking Good & Feeling Better', a demonstration of Wood Turning; a hugely entertaining talk on 'The History of Underwear' and December brought a demonstration of Sugar Craft with a festive theme. In addition to our normal meetings members have been out and about attending Conferences in Liverpool and Truro, making trips to theatrical entertainments, attending the Cornwall Federation Carol Service at the Eden Project and this past week, staging our own 'Hand Made in St Erme' Christmas Craft Fayre.

We would like to thank everyone who supported the Fayre and our local crafters. The morning went well and will enable us to present Cornish Blood Bikers with £500. A terrific achievement. Thank you to all W.I. members, the Silver Circle, Sophie Bertoli, Roger Lear and Jane Lewarne for all your hard work.

In January we shall have our celebration New Year Lunch and on the 2nd February there will be a talk on the 'British Red Cross at Work – Home & Overseas'. Our AGM will be held on Friday 2nd March and all are welcome to attend. Our new programme for 2018/19 should then be available.

Meetings are held at the Village Hall starting at 7.00pm on the first Friday of each month.

For more information please contact
The Secretary – Mrs Sue Mounter on 01872 263247

theWMI
INSPIRING WOMEN

ST ERME PLAYING FIELD TRUST

MILLENNIUM CLUB



The winners for October 2017 draw were:

1 st Prize	£50.00	No 101	R Trethewey
2 nd Prize	£30.00	No 2	R Trethewey
3 rd Prize	£20.00	No 54	W Leedham
4 th Prize	£10.00	No 71	C Retallick
5 th Prize	£5.00	No 261	S Eathorne

The winners for November 2017 draw were:

1 st Prize	£50.00	No 234	J Prowse
2 nd Prize	£30.00	No 189	N Brittan
3 rd Prize	£20.00	No 21	P Bowerman
4 th Prize	£10.00	No 52	A Wilkinson
5 th Prize	£5.00	No 194	N Leverton

Anyone interested in joining the draw please contact Rob Trethewey 07967246201

It costs £1 per number per month and all monies stays in your community

St. Erme Horticultural Society

VILLAGE SHOW NEWS

Do you have a lovely photo of a sunset?
Why not exhibit it in the village show
this summer? Other photos you can
enter include a public park or garden, a
boat or a rocky seascape as well as our
regular single bloom or black and white photo classes.



Did you know that it is 250 years since Captain James Cook
made his first voyage? The Society chose this
as a theme for one of the floral art classes
this year (18" space). Other themes
include an exhibit incorporating either
shell/s (12"), a bird cage (18"), a
basket (18") or a cup and saucer.

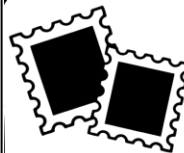


In a very spooky coincidence the
theme for our poetry class this year is
'The Wedding'. This really was decided
before the big announcement from the
Palace!



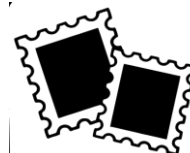
The Annual Show will be held at

St Erme Community Centre on Saturday 11th August



STAMPS

Rozelle Trevethan
Trezell, St Erme
(the cottage next to the
Village Hall)
Is collecting stamps in aid of
Crohns.
Please drop in any used
stamps you have.



NEWS from ST. ERME CHURCH for January and February 2018

Another Christmas over, another year begun!

I wonder how you rate 2017

For individuals and families, communities and countries, no doubt we conclude, 'a year of mixed fortunes' which makes us greet 2018 with some anxieties as well as excitement.

Life can certainly change overnight, and that's one reason for pondering where our security lies. Outward circumstances and our own control give us no guarantees. Jesus knew that, and He offered the good news that to belong to His Kingdom brings its own security and surprising blessings – blessings when we struggle or mourn, feel insignificant, tempted or empty, hard done to, even ridiculed, or find ourselves 'piggy in the middle'. Neither our ultimate security nor these blessings can ever be taken away. They also enable us to become fully human, as well as helping us to take the eternal perspective on life and purpose.

So, why not take up a new year challenge to find out about belonging to the Kingdom of Heaven, or making more of the privilege of being God's treasured sons and daughters, even princes and princesses?

I'd be delighted to help!

Two memorable occasions last year were **the Remembrance Sunday Service and Tea**, and the **Christmas Carol Service with the School Choir**. So a very big **THANK YOU** to all involved.

As you probably know, we are now in the process of looking for a new Team Rector for our Benefice of Churches; so your prayers for this will be appreciated.

We wonder if there are any **Flower Arrangers** who would like to take a turn at doing the flowers in Church. If you'd like to have a go, please do contact Jennie Keeler – 01872 520223.

Do pop in to see us, and keep an eye open for special events.

Sundays: Holy Communion at 9.30 a.m.;

Family Holy Communion first Sundays monthly.

31st December, Team Service, Creed; *no Service at St. Erme*

Revd Ellie Goldsmith, Team Vicar, Tel. 01872 520192, ellen.goldsmith@btinternet.com

Safeguarding Officer: Jane Sloan jsloan24@btinternet.com

For more information <https://www.facebook.com/StErmeParishChurch/>

Village Hall

Hello and a Happy New Year to everyone. I am sure that the years pass by more quickly than ever.

We have had the best year ever for the hall and it is getting difficult to find a slot for some wanting to book, but don't let it put anyone off asking. We have all the regulars we look forward to another good year, this will take us closer to having the disabled access built, hopefully this year.

We had a pretty good Christmas Craft fair and made £150 towards our fund; there will be another fair this spring, if anyone would like a stall do please get in touch with any of the committee.

We treated the hall to new Christmas decorations to replace the rather tired ones which had got well tired, comments were appreciative and it did look good.

Rgds Sally J
Secretary Village Hall

THE MOBILE LIBRARY

WILL BE AT WELCOME CLOSE ON

5th January

And

2nd February

From 10.30 to 10.50am

You will need a library card to use this service.
You can join the library online or on your first visit to the mobile library.

When you wish to take books out of the library you will need your library card with you.

Online services are available to browse the catalogue, reserve or renew your books and use the online library to download eBooks, eAudio books, eMagazines and reference resources.

The Community Library Assistant on the Mobile Library will be able to help you to get a library card and to use the services.

Silver Circle

The past few weeks have been very busy for the Silver Circle members. Over 19 of them have taken part in our Craft sessions, making cards, cushions and children's toys, along with Christmas tree decorations. The knitters have knitted Christmas stockings and hats along with clothes for Teddies. A wide variety of goodies were made which we were able to offer for sale at the recent W.I. Christmas Fayre. We did very well and in addition to our donation for Blood Bikers, the income will help to subsidize our forthcoming Christmas Lunch.

All aspects of the Club have gone well and we are looking forward to shortly issuing our new programme. It does look at last as though we may have found a singing teacher. If so, we will start 'Singing for the Brain' to which all are welcome to attend.

We start the New Year with 'Exercise', to move those extra Christmas pounds, and our New Year Party on the 18th of January at the Village Hall. Craft sessions will continue through the Spring and these are very social gatherings.

HELP WANTED

Gentlemen we need help to set up the hall – First Thursday of the month. Our gentlemen members are now at an age where heavier lifting should be watched and NOT practiced. PLEASE HELP if you can – ring 3321599 for more information.

We hope that the New Year will bring us a few 'younger' members. Although all over 55 years are welcome.

Our full meetings are held on the 1st Thursday of each month at the Village Hall. Exercise sessions are on the 2nd and 4th Thursdays at 10.30pm in the Trispen Chapel Sunday School rooms. The Craft Group currently meet at 2.00pm on the 3rd Thursday of the month, also at Trispen Chapel Rooms.

Coming Up:-

Thursday 18 th January	New Year Party	Village Hall	2.00 for 2.30pm
Thursday 1 st February	AGM & Social	Village Hall	2.00 for 2.30pm
Thursday 1 st March	St Piran's Lunch	Village Hall	12.00 for 12.30pm

Keep your eyes out for our monthly posters at the shop and on Village notice boards.

For a full programme or more information please call Jo on 321599 or Margaret on



Trispen, Truro, Cornwall. TR4 9BJ. Tel: 01872 279539.
Email: secretary@st-erme.cornwall.sch.uk. Website: www.st-erme.cornwall.sch.uk

NURSERY PLACES at St Erme with Trispen School

Do you have a child under the age of 3 for whom you would like a nursery place next year? We hope to offer morning and afternoon sessions to three year olds from September to meet parental demand. If you would like a place for your child please call in to school and fill in an admission form at the office to help us plan for our staffing and nursery provision.

THANK YOU!

Stay and Play Together at St. Erme with Trispen School

Play facility run by Truro Nursery for parents / carers and babies / pre school children £3.00 per session.

Every Friday (term times) from 1.30 p.m. to 3.00p.m.at school.

We are a happy, hard working and successful village school rated by OFSTED in 2015 as consistently good and outstanding, with outstanding behaviour and safety. Central to our school community is a very positive ethos of high academic standards, excellent behaviour and independent learning. Our children are happy and enthusiastic learners and achieve very well. We make our learning environments and our lessons engaging and fun and we have a thriving Early Years Foundation Stage Unit for children aged 3 to 5 with excellent indoor and outdoor learning facilities. If you are considering a school place for your child and would like to come and look around during the school day, please contact us and I will be happy to show you around and answer any questions you may have. Alternatively, if there is any information you can't find on our website then please do get in touch by calling in, by email or by phone.

We look forward to meeting you!

Mrs Julie Orrell Headteacher

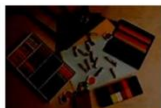
Sport and Activities

St Erme Art Group

This is a friendly and informal group of people who like to draw and paint.

We meet at the
St Erme Community Centre
on
Monday afternoons
from 2 till 4pm.

Taster sessions are free.
For further information please
ring 01872 223498



EmmaJize

Kernow

POUND

ROCKOUT. WORKOUT.

Mondays at St
Erme Village Hall
6.30pm £4



Limited spaces, booking essential

Get fit and work the whole of your body with this cardio based rock workout using the techniques from pilates and drumming.



VariFit

Wednesdays at St Erme Village Hall

6.30pm £4, booking preferred.

Get fit and work the whole of your body with a mixture of fitness styles to music, including some POUND tracks to keep you rocking throughout your workout.

Contact Emma on 07912176394 or emma-dungate87@hotmail.com

FaceBook Page; EmmaJize Kernow



ST ERME CRICKET CLUB

During the winter months we will be holding various fund raising events. Please look out for posters around the village.

The 2018 season will begin at the end of April but we will be holding winter nets at Truro College Cricket Centre on the following Tuesdays from 8-10pm – 30 January, 13 and 27 February, 13 and 27 March and 10 April.

In addition we have entered the indoor 6 a side competition.

Junior nets will be advertised as soon as they have been arranged.

If you have any questions regarding the cricket club please contact Nick Cole, secretary 01872 270805.



WANTED

FOOTBALL PLAYERS

We are looking for players to play in a local Football Team

If you're in school years 6-7 come and play for Truro Predators

Please Call

Dan – Mobile 07703 974480



TRISPEN TAEKWON-DO CLUB



**Every Monday Evening
At St Erme Community Centre**

**Juniors (7 - 12 Years): 6pm - 7pm
Seniors (12+): 7pm - 8pm**



This Korean Martial art is characterised by its fast, explosive movements and beautiful and powerful kicks. Taekwon-Do strengthens your body and improves your health through physical exercise and conditioning.

This is a great sport for Children too as it increases: coordination, flexibility, balance, confidence, athletic abilities, self-awareness, and, improves their capabilities in self-defence.

Come and have a go with our FREE MONTH trial period!



For further information please contact the lead Instructor
Mrs Rayment (3rd Degree)
Tel: 07548 116943
Email: trispin.instructor@tarantek.co.uk
*All club instructors are licensed and CRB checked.
Club is licensed UKGT member*

**Younger members (5yrs +) may be considered with discretion of lead instructor.
Please attend initial sessions in loose clothing.**

Sponsor our ponies!

Cornwall's National Nature Reserves: Conservation Ponies

Help us to conserve the National Nature Reserves of Cornwall by sponsoring our herd of native breed ponies for a year.

Through their grazing, our ponies maintain dynamic ecosystems; they control vigorous species of plants and prevent them from dominating. In turn, these healthy habitats can support some of our rarest wild flowers and animals.



There are three levels of sponsorship – bronze, silver and gold. Sponsors will receive a certificate, regular herd updates, and a variety of other benefits depending on the sponsorship type chosen.

Find out more and sponsor our ponies* at www.easydonate.org/NENG002, visit our East Cornwall National Nature Reserves Facebook page or find us on Twitter @NE_DCloS.

* Your donation will be processed and administered by the National Funding Scheme, operating as DONATE, a charity registered in England and Wales (1149800) and Scotland (SC045106). For Terms & Conditions, see www.easydonate.org

Natural England needs to raise funds for this and for other charitable purposes.



www.gov.uk/natural-england



Registered Charity No 203644 (England & Wales) and (Scotland)

**£5
Cat Neutering
(Means Tested)**

Truro & District Branch

If you live in the postcode areas of
TR1-TR9, TR14-TR27, PL28

Call our Branch Helpline
01872 463466

This campaign is funded and managed by
Truro & District Branch of Cats Protection

Shared Lives South West, based in Scorrier, sent the following message for inclusion in our village magazine.

We are looking to recruit in the Truro .

We support around 500 vulnerable adults throughout Devon and Cornwall and match them with a carer. In turn our carers open their own family home to the people and they either live or go on short breaks to their carer's home.

It's a wonderful alternative to residential care, support people with a learning disability, mental health issues, illnesses relating to older age and parents with a learning disability.

We've won countless awards but there are still many people who don't know we exist.

If you'd like to know more contact:

Dawn Ellis

Communication Officer | Shared Lives South West

01626 882562 | DEllis@sharedlivessw.org.uk | www.sharedlivessw.org.uk

ST ERME COMMUNITY CENTRE

JANUARY AND FEBRUARY EVENTS

Takeaway Food Service

Thursdays from 5.30pm to 9.00pm

Fridays and Saturdays from 6.00pm to 9.00pm



PRIZE BINGO

Friday 19th January

Eyes Down 7.30pm

Bar open for food from
6.00pm



SUNDAY CARVERY

28th January

25th February

12.00pm

til

3.00pm



Booking Essential

07745008172 01872276877

PIE NIGHT

Saturday 10th February

6.00pm



KIDS HOLIDAY FUN

Tuesday 13th February

12.00pm

Childrens Entertainer and
Coffee Shop



**ST ERME COMMUNITY
CENTRE**

IS AVAILABLE TO BOOK

01872 276877

stermeccbookings@hotmail.com

Like Us On
facebook 

**No
membership
needed**

All Welcome

St Erme Parish Council



NEWSLETTER
ISSUE 27

JANUARY / FEBRUARY 2018

Contact details:

Clerk:
Sally Trethewey

1 Forestry House,
St Erme
Truro
Cornwall
TR4 9BW

Tel: 07525130663

E-mail:
stermepc@btinternet.com

Website:
www.stermeaparishcouncil.org.uk

.....

Cornwall Council
www.cornwall.gov.uk

Tel: 0300 1234 100

Contents:

Community Benefit Monies	Page 1
New Member	Page 2
Car Parking	Page 2
Members, and meetings	Page 2

CONSULTATION

Community Benefit Monies

Following the Tregassow Solar Farm installation we currently have **£10,000.00** of Community Benefit monies to spend in the community.

We would like to know what you would like these monies spent on. Is there an existing project within the village/community that would benefit
or
a **new** project ?

Are there any parish organisations that have a project that could benefit ?

We would like parishioners and parish organisations to put ideas forward for consideration.

Once ideas have been received we will hold a public consultation so the community can consider each project and vote on their preferred choice.

Depending on the projects put forward monies may go to one large project or support several smaller projects.

Please forward your ideas for consideration to the clerk at stermepc@btinternet.com or in writing to
1 Forestry House, St Erme, Truro TR4 9BW

(applications will need to contain as much information as possible stating how the project would benefit the community)

DEADLINE

Applications must be received by

Friday 16th February 2018.



New Member

We would like to welcome Patricia Couch who was co-opted on to the council at our last meeting held on Tuesday 7th November 2017.

We now have a full council following the elections last May.

Information about St Erme Parish Council can be found on our website www.stermeaparishcouncil.org.uk.

Where you will be able to view agendas, minutes of meetings, policies, services, members details etc.

Car Parking

We are regularly notified of inconsiderate parking in the village.

Examples of inconsiderate parking are blocking or parking too close to garages and driveways, parking on grass verges or pavements or on junctions.

Please also remember that inconsiderate parking can also effect the emergency services attending incidents which could be life threatening. This could effect any one of us.

Also we are in a rural agricultural community with modern day farm practices which sometimes require access along the roads with large machinery.

PLEASE THINK BEFORE YOU PARK

Your Councillors are:

Cllr Robert Trethewey BEM: (Chairman)

1 Forestry House, St Erme
Tel: 07967246201
E-Mail: rtrethewey50@btinternet.com

Cllr Sally Jones:

67 Polisken Way, St Erme
Tel: 01872 272352
E-mail: SAJones@obtmail.com

Cllr Phil Hodgkinson

25 Polisken Way, St Erme
Tel: 01872 277895
E-mail: phodgkinson25@btinternet.com

Cllr Patricia Couch

16 Chancery Close, St Erme
Tel: 07908 957845

Cllr Colin Pound: (Vice-Chairman)

40 Polglase Walk, St Erme
Tel: 01872 275101
E-mail: colin.pound51@btinternet.com

Cllr Philip Jones:

67 Polisken Way, St Erme
Tel: 01872 272352,
E-mail: Jones30@obtmail.com

Cllr Edwin Riggs

1 Ennis Close, St Erme
Tel: 07392575275

Cllr Eathorne-Gibbons (Cornwall Councillor)

27 Lemon Street, Truro, Cornwall TR1 2LS
Tel: 01872 275007
E-mail: meathornegibbons@cornwall.gov.uk

Meetings

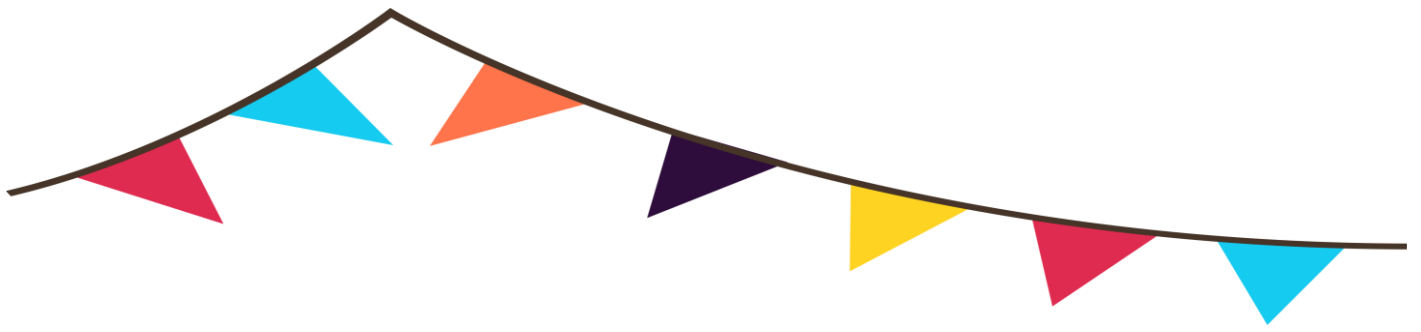
Members of the public are welcome to attend any meetings and are given 15 minutes during public participation to discuss any items on the agenda. Meetings are usually held on the first Tuesday of the month at the St Erme Community Centre.

Occasionally there may be extra meetings when required due to planning application deadlines or any urgent business that may arise and the venues of meetings may be different, please check on the agenda.

The agendas of all meetings are displayed in the notice boards three clear days before and commence at 7.30pm unless otherwise stated.

The next meetings of the council are as follows:

Tuesday 9th January 2018
Tuesday 6th February 2018
Tuesday 6th March 2018



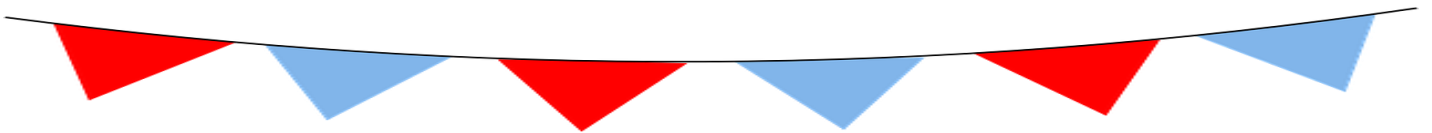
Coming soon

Funday 20

Watch this space!

2018 is the 20th Anniversary of this Community event.
It is held on the last weekend in July .

To make this a special 20 year celebration we have booked
It's a Knockout
for the Saturday. More details at & after the AGM.



Advertising

The St Erme & Trispen Fun Day Committee manages and oversees the Village Voice, including the finances.

All contributions for the next issue of the Village Voice must be received by Friday 16th February for the March/April edition.

Send your entries electronically to stermevillagevoice@gmail.com in a pdf format to preserve formatting. All entries to be submitted as ¼, ½ or full A4 page.

The Village Voice is a free independent magazine delivered in the parish of St Erme. The St Erme & Trispen Fun Day Committee, its members or the Editor are not responsible for the content of articles or adverts submitted, and items published may not necessarily reflect our own views.

Advertise with us:

If you are a business or local organization interested in advertising in the Village Voice, please email stermevillagevoice@gmail.com.

Business Prices

One-off advert

¼ page £5 per issue

½ page £7 per issue

Full Page £10 per issue

Regular Advert

¼ page £20 per annum (6 issues)

½ page £35 per annum (6 issues)

Full page £50 per annum (6 issues)

Local Organisations

Regular Advert only

¼ page £10 per annum (6 issues)

½ page £17.50 per annum (6 issues)

Full Page £25 per annum (6 issues)

Afternoon Dog
Walking Available
in St Erme & Trispen

Affordable Rates &
Discounts for owners
with more than
1 dog

Contact Justin on
01872 262240

Time to come out of hiding
Now open Cornwall's luxury hotel for cats



 **meadow**
cat hotel

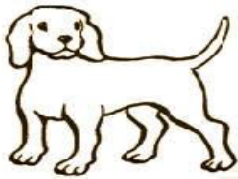
Stairfoot, St Erme, Truro, TR4 9AT
Telephone: 01872 888611
E-mail: Info@meadowcathotel.co.uk
Web: www.meadowcathotel.co.uk
[Facebook.com/MeadowCatHotel](https://www.facebook.com/MeadowCatHotel)



Ann Spary
Nansough Farm, Ladock
Boarding Kennels
01726 882077



Good friendly personal service by dog breeder with 55 years experience.



Collection & delivery if required.
Reasonable Prices.



WANTED

Tools, records books, Old toys and
hallmarked jewellery, even if it is broken.
Fishing tackle, medals, pre-war furniture
etc.

Cash Paid

Garden and household rubbish removed,
e.g washing machine, cooker etc. for a
fixed fee.

Deceased effects disposed of
sympathetically with the up most respect.

For fast friendly reliable service

Tel: Perce on

07709620545

Environment agency approved!



Trevella Farm Self-storage

Trispen, Truro, TR4 9BD

SAFE AND SECURE

Lock-up storage units of various sizes
Available from £16 + VAT per week

Please contact us for details
Telephone 01872 510504
rosiejgray@gmail.com

A Helping Hand for Cornwall

CLEANING AND GARDENING SERVICES

If you, or a loved one, are having difficulties with everyday tasks, then we can give you the Helping Hand you need!

For more information and a full list of services, please visit the website www.ahelpinghandforcornwall.vpweb.co.uk or look for us on Facebook.

Or for a friendly chat about our services ring Andrew on [01872 496106](tel:01872496106) or [07903652251](tel:07903652251), alternatively email us at ahelpinghandforcornwall@gmail.com

Experienced and friendly staff who are always willing to give A Helping Hand.



**IS YOUR WASHING MACHINE
SICK?**



CALL THE DOCTOR- NOW!

01872 270896 07733186609

JOE PRIDMORE

REPAIRS TO MOST LEADING MAKES OF

WASHING MACHINES

DISHWASHERS

TUMBLE DRYERS

ELECTRIC COOKERS

TELEVISIONS & VIDEO RECORDERS

Kevin Bray LTD PLUMBING and Heating services

- Installations
- Maintenance
- Repairs
- Full bath/shower installations
- Un-vented hot water installations

Local friendly service

Mobile 07974643404

Tel. 01872 278714

kevinbrayplumbingandheating@yahoo.co.uk



Registered
Business



JAMES BROTHERS

Painting & Decorating

- Professional Painting & Decorating Service
- All aspects of Internal & External work catered for
- A family run business
- Feel free to call or email us to arrange a quote

- Telephone: 01872 242258 or Mobile: 07469732294
- Email: jamesbrospainting@btinternet.com



Transforming spaces for your home & business.

Agricultural and forestry contractors

Seasoned firewood for sale

Softwood/mixed or hardwood loads 1 – 5 m

Log nets and kindling available

Firewood processor with operator for hire

For all enquiries please call either:

07768 066845

07813 978954

Or contact me via my email:

Timbeacham73@gmail.com

N. J . Light

Electrical Contractor

Domestic • Commercial • Industrial
 Free estimates • Competitive rates
 Part P approved contractor
 Storage heater sales, servicing and repairs



OFFICIAL INSTALLER
 INTEGRAL DIGITAL HEATING

Rointe approved installer • Free surveys

Telephone: 01872 262815

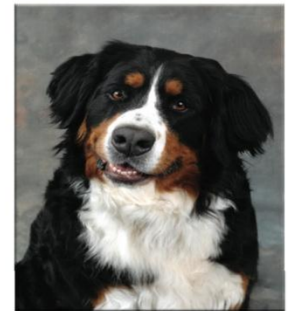
Mobile: 07976 633904

E-mail: njlight@btinternet.com

Electrical Safety Register



HELEN BARNECUTT PHOTOGRAPHY
 WEDDINGS • CHILDREN • PETS



9 Treworgan View
 Trispen
 Truro
 TR4 9AH
 01872 260422
 07779 966670

www.helenbarnecuttphotography.co.uk



SMART EXCHANGES
Clothing Agency

10A New Bridge Street
 Truro TR1 2AA
 Tel: 01872 276433
 Open Mon-Sat 10am-4pm

Find us on Facebook

Stockists of good quality designer & high street fashion

- Christmas Party wear
- Ball Gowns
- Cocktail Dresses
- Outerwear
- Wedding Dresses
- Mother of the Bride
- Casual Clothing

 **HERBALIFE NUTRITION**
Independent Member

Are you interested in: Losing weight, building muscle or generally being healthier?

If so, Herbalife is the Health Brand for you.

My name is Ben and I am a Wellness Coach. Together we can identify and work towards achieving your personal health goals with a combination of nutritional advice and support.

For more information, or to arrange a trial please contact me on benstokes29@hotmail.com or check out my Facebook page at facebook.com/BenStokesWellnessCoaching





TRUSTY LOGS LTD
Fuel For Your Fire

A LOCAL CORNISH COMPANY HERE TO MEET ALL YOUR NEEDS.

We supply highest quality kiln dried logs and Bio fuel throughout the South West. We can provide any amount from a few nets to full crates.

All with **FREE DELIVERY** by one of our friendly drivers.

Take a look at our website

www.trustylogs.uk

to see some of the great offers we have on at the moment and choice of highest quality products.

TO DISCUSS YOUR REQUIREMENTS

Call **01872 321585**

Text **07983852803**

Email **orders@trustylogs.uk**



Munchkins

Preschool Nursery

Free funded places available

Visit us for an informal chat

and see why we are different to other nurseries.

munchkins_nursery@btinternet.com

01872 858040

www.munchkinsnursery.wix.com/preschool



FARMING



CLOTHING



EQUINE



FOOTWEAR



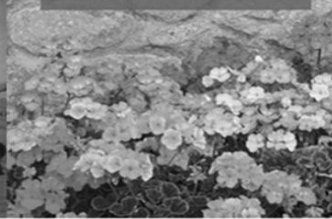
M.A. GRIGG

Est1970

PETS



GARDEN



TOOLS



Open 7 Days
a week
Mon - Fri
7.30am - 5.30 pm
Sat
7.30am - 5pm
Sun
10am - 4pm

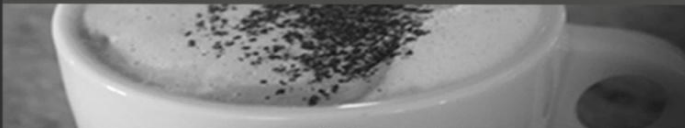
01726 65656

www.magrigg.co.uk info@magrigg.co.uk

Make a day of it!

FREE PARKING

Grigg's
RESTAURANT



Open 7 Days
a Week

Mon - Fri

8am - 5pm

Sat

8am - 11pm

Sun

9.30am - 4pm



01726 69997

www.magrigg.co.uk

e: restaurant@magrigg.co.uk

Pendennis, Sticker, St Austell
Cornwall
PL26 7JH



If you are thinking of selling/
letting a property and wondering
which agent to choose...Think...
Lewis Haughton Wills

For advice based on results, contact us today.

Truro **01872 264120** / truro@lewishaughtonwills.com

Falmouth **01326 211511** / info@lewishaughtonwills.com

The Bay & City Estate Agents

Lewis Haughton Wills

lewishaughtonwills.com



Mobile Hairdresser

Salon standard without salon price

CUT & BLOW DRY	£17
DRY CUT	£12
BLOW DRY	£10
CHILDREN	£ 5
GENTS	£ 7.50
FOILS	£35 - £45
TINT	£20

Sara Trevethan Tel:07890261225

Nvq qualified with over ten years salon experience



Find **Hair by Sara Trevethan**
On Facebook



2 Bedroom apartment to rent— Balaia Golf Village, Albufeira, Algarve, Portugal

En-complex, 500m to beach, 6 outdoor pools, a spa, 2 restaurants and bars, kids club.

Sleeps 6, 2 double bedrooms (one en-suite) with double sofa-bed in lounge. Fully equipped kitchen including washing machine, large lounge / diner with satellite TV, 2 balconies.

Check it out on **tripadvisor**

Enquiries to — balaia118@hotmail.com 5% discount quoting 'Village Voice'



OFFICE OR HOUSE CLEANING

One off cleans

&

Carpet / upholstery cleaning



Commercial or Domestic

FULLY TRAINED LOCAL STAFF

FULLY INSURED

Covering St Ives to Bodmin

Tel: 01872 242027

Web: www.dublcheck.co.uk

E-Mail: info@synergysw.co.uk



Justin's Sanctuary

Killigrew Cottage, Trispen, TR4 9AZ

Open Daily from 10am - 5pm

Clairvoyance/Mediumship

Crystal/Energy Healing

Chakra/Aura Cleansing

Animal & Equine Healing

Spirit Release & House Clearings

Crystal Facial & Massage

One-2-One Yoga & Meditation

Spiritual Art Readings & Commissions

On - Going Classes & Workshops for
Spiritual & Personal Development

Metaphysical Counselling

Drop-ins Welcome, Booking Recommended

01872 262240, 07875 525260

www.justinrosevearehealing.com

Movement, Yoga & Meditation

with Justin Roseveare Energy Healer, Metaphysical Counsellor

A gentle class of Movement to release, relax & let go, Yoga to bring wholeness & unity, Meditation for deep inner peace & natural balance

Thursdays @
St Erme Village Hall,
TR4 9BJ
6:30 - 8pm
£7.50 per Class or £32
for 5 weeks

Drop-ins Welcome,
Booking Recommended

01872 262240, 07875525260

www.justinrosevearehealing.com



Group Travel



Enterprise Park, Midway Road, Bodmin, Cornwall. PL31 2FQ

 **+44 (0) 1208 77989**

W grouptravelcoachhire.co.uk  [grouptravelcwl](https://www.facebook.com/grouptravelcwl)  [@grouptravelcwl](https://twitter.com/grouptravelcwl)

2018 COACH EXCURSIONS

5th JAN - PETER PAN, THEATRE ROYAL

22nd MAR - MYSTERY TOUR

10th APR - SOUTH DEVON RAILWAY & DART CRUISE 18th - 24th APR - SCOTLAND & THE ISLES

12th & 13th MAY - WINDSOR HORSE SHOW & LONDON EXPERIENCE

22nd MAY - KILLERTON HOUSE & GARDENS

19th JUN - HELFORD RIVER CRUISE

22nd JUL - JURASSIC SEA CRUISE

4th AUG - COUNTRYFILE LIVE

17th AUG - ROSEMOOR FLOWER SHOW

21st AUG - DARTMOOR ZOO

25th - 26th AUG - DORSET STEAM FAIR

11th SEP - WIDECOMBE FAIR

16 TO 70 SEAT COACHES AVAILABLE FOR PRIVATE HIRE, CORPORATE WORK, WEDDINGS
(CAN INCLUDE STAG & HEN PARTY PACKAGE) AIRPORT BUS TRANSFERS.

FOR BOOKINGS AND BROCHURE PLEASE CALL

01208 77989 / 01208 72669 or Website: www.grouptravelcoachhire.com Email: benneymoon@btinternet.com

Wanted: Motorbikes/Mopeds

Any motorbike memorabilia/parts any age or condition.

The more rust the better, no bike too bad!

Can pay well.

Contact Michael Preston on 01872 241852

Studybuddies



pay-as-you-go
or
pay monthly

Private tutoring
in English
from ages 4 to adult



Dyslexia Screening

Competitive rates
30 years experience
Tuition in your home
CRB cleared

info@studybuddies.org.uk
www.studybuddiesuk.webs.com

01872 225004 07968 710966

Tregurra CHIP STOP

Opening Hours

Tuesday	4.00pm - 7.30pm
Wednesday	4.00pm - 7.30pm
Thursday	4.00pm - 7.30pm
Friday	11.30am - 2.00pm 4.00pm - 8.00pm
Saturday	11.30am - 2.00pm 4.00pm - 8.00pm



Telephone orders welcome

01872 261313



Pensilva Road, Truro, Cornwall TR1 1RS • Proprietor: **DARREN ROBERTS**

The Clock & Key Inn

Trispen

01872 279626

A local friendly Country pub

Open 7 days a week

Sunday – Thursday 12 – 11pm

Friday – Saturday 12 – midnight

New Menu

Lunches served 12 – 3pm

Evening menu 6 – 9 pm

Locally sourced produce

Home made specials

Senior Citizens lunch

Tuesdays 12 – 3 pm

2 course roast lunch £6.50

Well behaved dogs and children welcome

Village contacts

**ST ERME COMMUNITY CENTRE**

Available for private hire for any event:

- Parties
- Weddings
- Christenings
- Corporate events

Catering Service available

Regular groups:

- Tae Kwon Do
- Truro Rock Choir
- Zumba
- St Erme Cricket Club
- Football Clubs
- Art Group
- St Erme Parish Council

Licensed Bar
(no membership—open to everyone)

Bar opening hours

Thursdays 5.30pm to 9.00pm
Fridays from 6.00pm
Saturdays from 1.00pm

Bar food and takeaway menu available
from 6.00pm to 9.00pm
Fridays and Saturdays

Sunday Carvery
served once a month

Thursday's
Fish & Chip Takeaway
5.30pm to 9.00pm

Booking Clerk:
Sue Harrington: 01872 276877 or stermecbookings@hotmail.com
All monies raised stays within our community

Please check out our Website and Facebook page for future events:
www.stermecommunitycentre.co.uk



St Erme Village Hall

Committee Members

Chair	Marie Wills	01872 510329
Secretary	Sally Jones	01872 272352
Treasurer	Philip Jones	01872 272352
Member	Evelyn Jewell	01872 261733

Plus representatives of the village organisations

Please address all correspondence to the secretary at the following address:
67 Polisken Way St Erme TR4 9RG

To book the hall please contact
Sally or Phil on 01872 272352
Email sajones@obtmail.com or jones30@obtmail.com

HALL HIRE CHARGES

Local organisations	£7.00 per session
External organizations	£14.00 per session

Charges for electricity and heating are included

OTHER CHARGES

Crockery	£3.00 per hire
----------	----------------

Deadline is Friday February 16th for the
March/April edition.

Please send your contributions to the editor at
stermevillagevoice@gmail.com

Local Deliveries

Quality Family Butcher
L George

Delivered to your door

Delivers at St Erme/Trispen

Tuesdays 3.30pm - 5.30pm&

Saturdays 1pm - 3.30pm

Telephone 01872 510219or Mobile 07817
339002

Milkman

Can deliver over 150 daily essentials to your
door

Telephone 01209 715703

Fax 01209 612126

or visit on-line at www.milkandmore.co.uk

Diploma Coal Merchants

C Rudrum and Sons Ltd

Prompt and reliable deliveries in your area,
weekly.

Telephone 01209 215561

Local Log deliveries

Alan Caple

01872 510538

Fresh local fish delivered to your door

Kernow Fisheries Ltd

Mobile 07826059777, ask for Darren

Useful Numbers

Police (urgent)	999
Police (non urgent)	101
South West Water	0800 169 1144
SWEB	0800 365 900
St Erme Parish Council	01872 240583
Cornwall Council	
General enquiries	0300 1234 100
Abandoned Vehicles	03001234 202
Building Control	0300 1234 151
Dog Control (Fouling)	0300 1234 212
Drains and Sewers	0300 1234 202
Fire and Community Safety	0300 1234 232
Highways and Roads	0300 1234 222
Street Cleansing,	0300 1234 141
Litter & Graffiti	0300 1234 141
Noise Disturbance	0300 1234 212
Recycling and Rubbish	0300 1234 141

Parish Organisations

St Erme Community Enhancement Group

Kati Bawden [Tel:07791773563](tel:07791773563)

kati@katibawden.wanadoo.co.uk

St Erme Silver Circle

Organiser: Jo Collins Tel: 01872 321599

St Erme W.I

Secretary: Sue Mounter 01872 263247

St Erme Village Hall Committee

Booking Clerk: Mrs Jones - 01872 272 352

St Erme Horticultural Society Show

Mrs Helen Cole, 63 Polisken Way, St Erme

01872 270805

St Erme Short Mat Bowls

Secretary: Mr Brian Wills, Lea-Vu, St Erme

01872 271661

St Erme Community Centre/St Erme Playing Field Trust

Secretary: Michael Edwards 01872 859675

mandm.edwards19@talktalk.net

Booking Clerk: Sally Trethewey 01872 240583

sallytrethewey@btinternet.com

St Erme Cricket Club

Secretary: Mr Nick Cole 01872 270805

St Erme and Trispen Twinkle Tots

Parent & Toddler Group

Sarah Jones 07799 642226

St Erme with Trispen CP School

Headteacher Mrs Julie Orrell, School Lane,

Trispen, TR4 9BJ 01872 279539

Trispen Football Club

Secretary: Mr Dan Mitchell, 108 Treffry Road,

Truro, TR1 1WE, Tel 01872 222358

St Erme Church Team Rector

Revd Andrew Wade, The Sanctuary, Wagg Lane, Probus,

Truro, TR2 4JX. Tel: 01726 882746

Trispen Methodist Chapel

Secretary Mr Sid Deeble 01872 241104

St Erme History Group

Mrs Marie Wills, Penhale Farm, St Erme

01872 510329

St Erme with Trispen Youth Project

Kate Smith (Young People Cornwall)

01872 222447